



COLLECTIVITIES SOLUTIONS

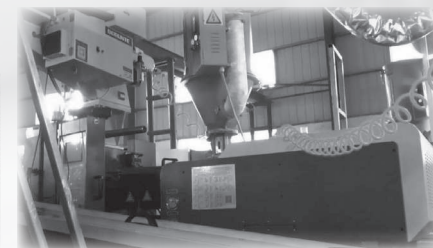
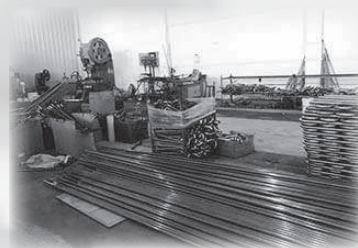




Simex, was created by professionals with **more than 50 years** of experience in the equipment market, therefore, we are specialists in designing, manufacturing and marketing a wide range of products for communities.

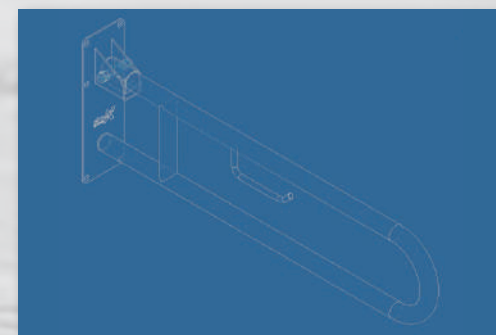
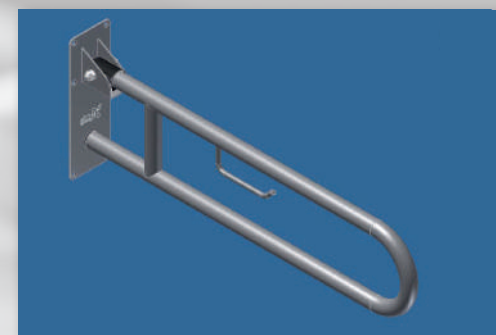
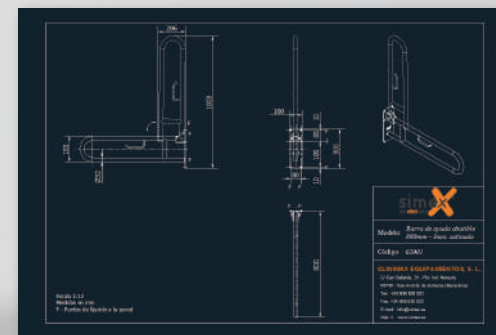
At **Simex** we analyze the needs of our clients, in order to anticipate their demands and be able to conveniently advise them, offering the latest technological advances and innovative concepts.

Simex is currently considered one of the main providers of **equipment for collectivities**, both nationally and internationally, which gives us extensive experience in the needs of the sector, offering novel solutions, both in **design** and **functionality** and **quality**.





Simex's objective is to cover 100% of our clients' needs. For this reason, we constantly work on developing the best products, combining **efficiency, safety, durability** and **design**.



ALHAMBRA SOLUTION





Ref. 01035

Hair dryer - 1.600 W
| Basic Range



Material: ABS.
Finish: White with
chromed inserts.
Dim.: 254 x 286 x 135 mm.

Ref. 02001

Folding bar - 800 mm | Inox



Material: Stainless Steel.
Finish: Inox. Satin.
Dim.: 300 x 100 x 800 mm.

Ref. 02005

Shower seat | Inox



Structure material:
Stainless Steel.
Surface material:
Stainless Steel.
Dim.: 445 x 450 x 427 mm.

Ref. 02019

Wall-floor fixed bar 3
anchorage points | Inox



Material: Stainless Steel.
Finish: Inox. Satin.
Left position.
Dim.: 879 x 150 x 776 mm.

Ref. 02036

Fixed bar 3 anchorage points
| Inox



Material: Stainless Steel.
Finish: Inox. Satin.
Left position.
Dim.: 200 x 135 x 600 mm.

Ref. 02070

Straight bar - 400 mm | Inox



Material: Stainless Steel.
Finish: Inox. Satin.
Dim.: 82 x 400 x 75 mm.

Ref. 02225

Mechanical adjustment
washbasin set



Dim.: 145 x 574 x 435 mm.

Ref. 02242

Mirror with frame for reclining
kit



Material: Stainless Steel.
Dim.: 800 x 600 x 28 mm.

Ref. 02258

Elevator with cover and
hygienic opening for toilet



Material: High density
polyethylen.
With durulux cover.
Dim.: 144 x 372 x 417 mm.

Ref. 04001

Soap dispenser
| Inox Range



Material: Stainless Steel.
Finish: Satin.
Capacity: 1,2 liters.
Dim.: 209 x 124 x 120 mm.

Ref. 05033

Wall-mounted toilet brush
| Classic Range



Material: Stainless Steel.
Finish: Satin.
Dim.: 368 x 90 x 121 mm.

Ref. 05034

Bin - 5 liters | Pedal



Material: Stainless Steel.
Finish: Satin.
Capacity: 5 liters.
Dim.: 276 x 200 x 258 mm.

TREVI SOLUTION





Ref. 02033

Standing folding bar | **Inox**



Material: Stainless Steel.
Finish: White epoxy.
Dim.: 823 x 150 x 751 mm.

Ref. 02120

Fixed bar 3 anchorage points
| **Inox**



Material: Stainless Steel.
Finish: White epoxy.
Right position.
Dim.: 200 x 135 x 600 mm.

Ref. 02130

Wall-floor fixed bar 3
anchorage points | **Inox**



Material: Stainless Steel.
Finish: White epoxy.
Left position.
Dim.: 879 x 150 x 776 mm.

Ref. 02163

Two angle bar right | **Inox**



Material: Stainless Steel.
Finish: White epoxy.
Right position.
Dim.: 980 x 820 x 800 mm.

Ref. 02225

Mechanical adjustment
washbasin set



Dim.: 145 x 574 x 435 mm.

Ref. 02243

Mirror with frame for reclining
kit



Material: White epoxy steel.
Dim.: 800 x 600 x 28 mm.

Ref. 02256

Stool with extendable legs
and adjustable



Material: ABS and Aluminum.
Dim.: 400 x 510 x 310 mm.

Ref. 02258

Elevator with cover and
hygienic opening for toilet



Material: High density
polyethylen.
With durolux cover.
Dim.: 144 x 372 x 417 mm.

Ref. 02261

Folding seat



Material: Stainless steel
white nylon finish.
Dim.: 200 x 315 x 485 mm.

Ref. 04049

Soap dispenser
| **Elegance Range**



Material: ABS.
Finish: White.
Capacity: 1 liter.
Dim.: 252 x 115 x 113 mm.

Ref. 05036

Bin - 5 liters | **Pedal**



Material: Steel.
Finish: White epoxy.
Capacity: 12 liters.
Dim.: 375 x 250 x 320 mm.

Ref. 06046

Paper dispenser
| **Elegance Range**



Material: ABS.
Finish: White.
Dim.: 380 x 260 x 188 mm.

GUGGENHEIM SOLUTION





Ref. 04066

Soap dispenser
| Linex Range



Material: ABS.
Finish: White.
Capacity: 1 liter.
Dim.: 260 x 123 x 110 mm.

Ref. 06036

Paper dispenser
| Elegance Range



Material: ABS.
Finish: White.
Dim.: 326 x 263 x 231 mm.

Ref. 05062

Bin - 12 liters | Pedal



Material: Steel.
Finish: Matt white epoxy.
Capacity: 12 liters.
Dim.: 360 x 220 x 312 mm.

Ref. 08002

Laundry cart - 270 liters



Structure material: Stainless Steel.
Canvas material: Nylon and polyester.
Finish: Khaki.
Dim.: 985 x 620 x 625 mm.

Ref. 08011

Cleaning cart



Material: High resistant plastic.
Finish: Grey and yellow.
Dim.: 960 x 510 x 1.125 mm.

Ref. 04067

Hydroalcoholic gel bottle



Content: 5 liters.
Ethyl alcohol: 70 %.

LOUVRE SOLUTION





Ref. 01073

Hair dryer - 1.800 W
| Linex Range



Material: ABS.
Finish: Silver.
Dim.: 300 x 200 x 149 mm.

Ref. 05164

Magnifying mirror
| Premium Range



Material: Brass.
Finish: Polished.
Dim.: 150 x 235 x 110 mm.

Ref. 05169

Individual hanger
| Brass Premium Range



Material: Brass.
Finish: Polished.
Dim.: 51 x 32 x 62 mm.

Ref. 05170

Double hanger
| Brass Premium Range



Material: Brass.
Finish: Polished.
Dim.: 60 x 110 x 56 mm.

Ref. 05171

Toilet paper holder reserve
| Brass Premium Range



Material: Brass.
Finish: Polished.
Dim.: 213 x 32 x 62 mm.

Ref. 05172

Toilet paper holder with cover
| Brass Premium Range



Material: Brass.
Finish: Polished.
Dim.: 87 x 28 x 151 mm.

Ref. 05174

Towel bar
| Brass Premium Range



Material: Brass.
Finish: Polished.
Dim.: 32 x 620 x 62 mm.

Ref. 05176

Triple towel bar
| Brass Premium Range



Material: Brass.
Finish: Polished.
Dim.: 32 x 620 x 110 mm.

Ref. 05177

Soap dish
| Brass Premium Range



Material: Brass.
Finish: Polished.
Dim.: 32 x 205 x 111 mm.

Ref. 05178

Toilet brush
| Brass Premium Range



Material: Brass.
Finish: Polished.
Dim.: 365 x 155 x 116 mm.

Ref. 05180

Towel glass shelf
| Brass Premium Range



Material: Brass.
Finish: Polished.
Dim.: 32 x 580 x 128 mm.

Ref. 07045

Bin - 5 liters
| Pedal Premium



Material: Stainless Steel.
Finish: Polished.
Capacity: 5 liters.
Dim.: 265 x 205 x 250 mm.

COLISEUM SOLUTION



05183

05149

05151

01070

05156

05153

05154

05157

05159

05184

07046



Ref. 01070

Hair dryer - 2.000 W
| Airtop Range



Material: ABS.
Finish: Black with
chromed inserts.
Dim.: 260 x 285 x 140 mm.

Ref. 05149

Towel glass shelf
| Black Classic Range



Material: Stainless Steel.
Finish: Matt black.
Dim.: 48 x 650 x 108 mm.

Ref. 05151

Towel bar
| Black Classic Range



Material: Stainless Steel.
Finish: Matt black.
Dim.: 48 x 650 x 108 mm.

Ref. 05153

Individual hanger
| Black Classic Range



Material: Stainless Steel.
Finish: Matt black.
Dim.: 48 x 48 x 60 mm.

Ref. 05154

Toilet paper holder with cover
| Black Classic Range



Material: Stainless Steel.
Finish: Matt black.
Dim.: 153 x 150 x 66 mm.

Ref. 05156

Towel shelf with lower bar
| Black Classic Range



Material: Stainless Steel.
Finish: Matt black.
Dim.: 125 x 650 x 211 mm.

Ref. 05157

Toilet paper holder reserve
| Black Classic Range



Material: Stainless Steel.
Finish: Matt black.
Dim.: 237 x 48 x 104 mm.

Ref. 05159

Toilet brush
| Black Classic Range



Material: Stainless Steel.
Finish: Matt black.
Dim.: 368 x 90 x 121 mm.

Ref. 05183

Magnifying mirror
| Premium Range



Material: Stainless Steel.
Finish: Matt black.
Dim.: 32 x 205 x 111 mm.

Ref. 05184

Rectangular soap dish
| Black Classic Range



Material: Stainless Steel.
Finish: Matt black.
Dim.: 380 x 230 x 84 mm.

Ref. 07046

Bin - 5 liters
| Pedal Premium



Material: Stainless Steel.
Finish: Matt black.
Capacity: 5 liters.
Dim.: 265 x 205 x 250 mm.

PISA SOLUTION



08035

08060

08086

08046

08076

08037



Ref. 08035

Hanger with clips
and safety ring



Material: Natural wood.
Dim.: 300 x 448 x 12 mm.

Ref. 08037

Telephone for
table or wall



Finish: Black.
Dim.: 200 x 125 x 71 mm.

Ref. 08046

Luggage rack | Premium



Material: Stainless Steel.
Finish: Satin.
Dim.: 550 x 500 x 460 mm.

Ref. 08060

Kettle kit | Premium



Tray material: Solid wood.
Kettle material: Stainless steel
and black polypropylene
Kettle finish: Satin.
Dim.: 220 x 490 x 200 mm.

Ref. 08076

USB Safe box



Material: High resistant steel.
Finish: Black.
Capacity: 27 liters.
Dim.: 200 x 420 x 370 mm.

Ref. 08086

Minibar - 30 liters



Refrigeration: Thermoelectric.
Finish: Black.
Door: Glass.
Dim.: 485 x 385 x 385 mm.

GIRALDA SOLUTION



CE RoHS

Ref. 01006

Hand dryer - 2.300 W
| Inoxflow Range



Material: Stainless Steel.
Finish: Satin.
Sensor operated.
Dim.: 235 x 267 x 210 mm.

Ref. 04023

Soap dispenser
| Inox Range



Material: Stainless Steel.
Finish: Satin.
Capacity: 1,2 liters.
Dim.: 157 x 177 x 115 mm.

Ref. 04063

Soap dispenser
| Ecoclean Range



Material: ABS.
Finish: White.
Capacity: 1,2 liters.
Dim.: 275 x 150 x 110 mm.

Ref. 05033

Toilet brush | Classic Range



Material: Stainless Steel.
Finish: Satin.
Dim.: 368 x 90 x 121 mm.

Ref. 05062

Bin - 30 liters | Pedal



Material: Steel.
Finish: White epoxy.
Capacity: 30 liters.
Dim.: 620 x 293 x 360 mm.

Ref. 05144

Horizontal baby
changing station



Material: High resistant
polyethylene.
Finish: White.
Dim.: 585 x 855 x 107 mm.

Ref. 06013

Paper dispenser
| Classic Range



Material: Stainless Steel.
Finish: Satin.
Dim.: 300 x 262 x 120 mm.

Ref. 06036

Paper dispenser
| Elegance Range



Material: ABS.
Finish: White.
Dim.: 326 x 263 x 231 mm.

Ref. 06054

Paper dispenser
| Inox Range



Material: Stainless Steel.
Finish: Satin.
Dim.: 265 x 250 x 120 mm.

Ref. 07012

Bin - 60 liters
| High capacity



Material: Stainless Steel.
Finish: Satin.
Dim.: 720 x 310 x 310 mm.

LICEU SOLUTION



06013



04025



07012



01061



03002



03020

CE RoHS

Ref. 01061

Hand dryer - 2.050 W
| Fastflow Range



Material: ABS.
Finish: Silver.
With electronic sensor.
Dim.: 700 x 300 x 215 mm.

Ref. 03002

Wall-hung individual urinal



Material: Stainless Steel.
Finish: Satin.
Dim.: 695 x 364 x 340 mm.

Ref. 03020

Wc with cistern



Material: Stainless Steel.
Finish: Satin.
Cushioned cap and service door.
Dim.: 680 x 370 x 460 mm.

Ref. 04025

Soap dispenser
| Inox Range



Material: Stainless Steel.
Finish: Satin.
Capacity: 1,2 liters.
Dim.: 123 x 210 x 120 mm.

Ref. 06013

Paper dispenser
| Classic Range



Material: Stainless Steel.
Finish: Satin.
Dim.: 300 x 262 x 120 mm.

Ref. 06054

Paper dispenser
| Inox Range



Material: Stainless Steel.
Finish: Satin.
Dim.: 265 x 250 x 120 mm.

Ref. 07012

Bin - 60 liters
| High capacity



Material: Stainless Steel.
Finish: Satin.
Dim.: 720 x 310 x 310 mm.

VERSAILLES SOLUTION



04071



06037



07003



09016

Sala Fitness



04074



Ref. 04071

Soap dispenser
| Ecoclean Range



Material: ABS.
Finish: Matt black.
Capacity: 1,2 liters.
Dim.: 275 x 150 x 110 mm.

Ref. 04074

Disinfection station with
thermometer | Ecoclean Range



Dispenser material: ABS.
Dispenser finish: White.
Support material: Aluminum.
Support finish: Black.
Dim.: 1.140 x 154 x 114 mm.

Ref. 06037

Paper dispenser
| Elegance Range



Material: ABS.
Finish: Black smoked.
Dim.: 326 x 263 x 231 mm.

Ref. 07003

Bin - 30 liters | Push Range



Material: Stainless Steel.
Finish: Polished.
Capacity: 30 liters.
Dim.: 655 x 305 x 305 mm.

Ref. 09016

Water dispenser | Inox Range



Material: Stainless Steel.
Finish: Polished.
Dim.: 1.250 x 365 x 395 mm.

Ref. 04067

Hydroalcoholic gel bottle



Content: 5 liters.
Ethyl alcohol: 70 %.

ACROPOLIS SOLUTION



04068

04061

08003

01090

05061



Ref. 01090
Wall ozone equipment



Material: Stainless Steel.
Finish: Satin.
Dim.: 160 x 270 x 85 mm.

Ref. 04061
Disinfection station
| Ecoclean Range



Dispenser material: ABS.
Dispenser finish: White.
Support material: Aluminum.
Support finish: Black.
Dim.: 1.140 x 154 x 114 mm.

Ref. 04068
Table Sanitizing Station
| Linex Range



Dispenser material: ABS.
Dispenser finish: White.
Support material: Steel.
Support finish: Black.

Ref. 05061
Bin - 30 liters | Pedal



Material: Stainless Steel.
Finish: Satin.
Capacity: 5 liters.
Dim.: 620 x 293 x 360 mm.

Ref. 08003
Row organizer

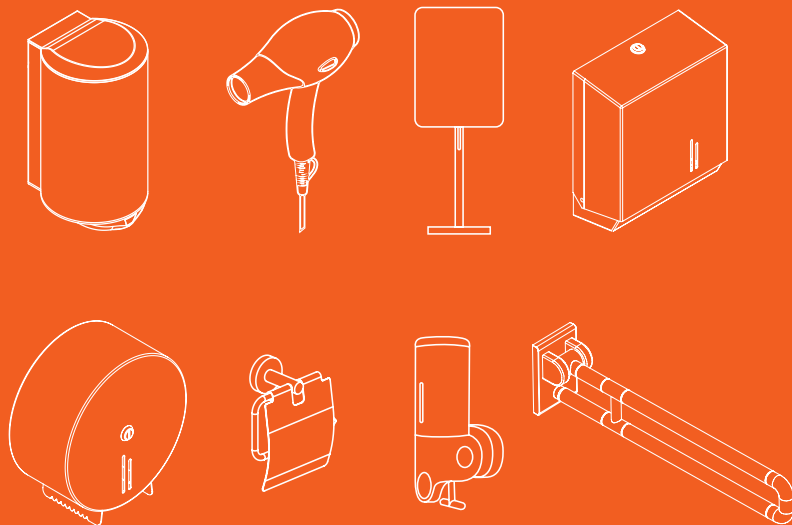


Material: S. Steel
Ribbon: Red.
Dim.: 918 x 320 x 320 mm.

Ref. 04067
Hydroalcoholic gel bottle



Content: 5 liters.
Ethyl alcohol: 70 %.



Headquarters:

C/Travessera de les Corts, 302.

08029 Barcelona • SPAIN

Tel. + 34 936 82 89 21

Mov. + 34 662 18 82 39

Offices and Logistic Warehouse:

C/Comunidad Castilla y León, s/n.

22520 Fraga (HUESCA) • SPAIN

Tel. + 34 974 03 53 44



National Contact:

comercial@simex.es

International Contact:

export@simex.es

www.simex.es